



Newsletter submissions: George Otto
 E-mail: newsletter@folkproject.org
 582 Long Hill Road, Gillette, NJ 07933
Deadline is the 15th

Membership, corrections/changes: Joanne Cronin
 E-mail: membership@folkproject.org

c/o Joanne Cronin
 200 Ross Drive, Apt.23
 Boonton, NJ 07005

Folk Project Officers:

President: Steve Humphreys
 Vice President: Kathi Caccavale
 Secretary: Jay Wilensky
 Treasurer: Chris Riemer



Trustees:

Trustees thru 2018: Olga Alvarez, Elizabeth Lachowicz, Bob McNally
 Trustees thru 2019: Ken Brody, Allan Kugel, Evelyn McNally
 Trustees thru 2020: Christine DeLeon, Dave Heistand, Steve Humphreys



facebook.com/FolkProject



twitter.com/TheFolkProject



youtube.com/c/FolkProjectVideo



The Folk Project

October 2018

www.FolkProject.org



**Garrulous Ghosties
 Divining Divas,
 Howling Werewolves,
 Angelic Choirs
 Unnerving Ululations!**
Friday, October 26, 2018, 7:30 PM

It's your turn to perform at The Minstrel's freakingly amazing and fun Halloween Party. This is a show you will not want to miss. Come sing about ghosties and ghoulies, long-leggedy beasties, and things that go bump in the night as well as a whole host of other grim, grisly and gruesome songs (or not). Whether you are a firsty or a favority, it's one of our four concerts each year featuring the Folk Project's own talented musicians. Get creative, sign up and plan to listen, join in and sing along, or perform if you so choose. You don't have to be a performer to come in costume. Join in the spirit of creativity, and Halloween, and come...dressed to kill! Come ready to have an outstanding time of fun and music. Contact Dara Diamant at: Halloween@FolkProject.org

Your Folk Project Needs You

In December, the Project will elect a slate of officers and trustees for 2019. Three officer positions (President, Vice President, and Secretary) and three trusteeships will be open.

The Nominating Committee, consisting of Jay Wilensky, Steve Humphreys, Mike Agranoff, Olga Alvarez, Jean Scully, and Lois DeRitter, will soon begin considering candidates for these positions, as well as for several committee chair posts. If you are interested in serving, or know of someone who is, please contact any member of the Committee.

—Jay Wilensky, Nominations Committee Chair.

QUICK GUIDE TO THE INSIDE	
Evening o' Music	2
Strummin' with Mile 12	2
Members' Gigs (& Friends)	7
Board Meeting: The Summary	10
Good o' the Order	11

NOTE: web links in the eNewsletter are now clickable

Evening o' Music

Sat., Oct. 13, 8pm • Marie Trontell & Jay Wilensky's

1111 South Branch Drive, Whitehouse Station, NJ • 908/823-0363

Our hosts have multiple rooms for song circles and the only things missing are YOU and your instruments and voices. (Ok, we can use snacks, desserts, and beverages to share, too.)

Directions from I-287:

I-78 West to Exit 24 and left onto Rt. 523/Oldwick Rd. At the T intersection turn left onto Rt. 22 East. Take the second right (comes very fast) onto Main St. Right onto Railroad Ave. This road curves sharply to the left then sharply to the right and continues alongside the railroad tracks. Second right onto Cornelius Lane. Straight at the stop sign (across Van Horne Road) where the street name turns to South Branch. 1111 will be in the sixth building on the left. Park on street or in unnumbered spaces only.

Two Ways to Win Big at Getaway!

Everybody at Getaway wins: musicians and listeners, smilers and frowners, uppers and downers, long-timers and first-timers, active doers and relaxed vacationers. Everyone gets a peaceful break from busy lives with the sublime bliss and exquisite joy of warm fellowship and great music.

There's two ways to win. Come for one day filled with impactful lessons, playing fun, activities for listeners, a glorious concert, meals, and friendly, like-minded people. Or come for three days, an all-inclusive weekend mini-vacation that's as refreshing as any Dizzyland kingdom at a tenth of the cost and twice the magic.

Fall Getaway is October 5-7, 2018, at a rural, weatherproof Y camp in North Jersey. For details, registration, and nonprofit pricing, go to folkproject.org/festival.

Strummin' with Mile 12

Sun., Oct. 28, 2pm • Rockaway, NJ

Until now, house concerts brought audiences the most intimate performance possible. No longer. The new "Strummin' with" series is breaking all boundaries and will bring you closer to the music and the musicians than ever before. After each living-room performance, we're holding a jam, sing-along, open stage, and potluck where artists play and schmooze with everyone. The Folk Project brings you national touring artists in a home setting, and you get to know them and make music with them.

October 28 at 2pm in Rockaway, NJ we'll be "Strummin' with Mile 12." They're an exciting, young, and accomplished bluegrass & folk band with exquisite harmonies and overwhelming instrumental prowess. Imagine five highly-skilled, polished, and university-trained touring performers that love to jam, party, and share good-time music with you and your friends.

Mile 12 came from Boston's Berklee College of Music and New England Conservatory. This exquisite and talented ball of traditional fire has performed extensively throughout the U.S., Canada, Ireland, New Zealand, Australia, and Japan, headlining major concert halls and festivals, including Grey Fox, FreshGrass, and the revered Joe Val Bluegrass Festival. Their music is in rotation on Sirius XM, and they are winners of the 2017 Momentum Award from the Bluegrass Music Association.

Admission is \$20, space is limited, and registration is required. Bring drink & snacks to share. Bring instruments to play. Bring your voice to sing and your smile to Mark and Robin's place on October 28. Click tinyurl.com/SW-Mile12 for more information and to register.



Feets Don't Fail Me Now!

Country Dance*New York: Contra every Sat., English Country every Tues., Church of the Village, 201 West 13th St. (NW corner of 7th Ave.), except July and Aug., www.cdny.org or 212/459-4080

Lambertville Country Dancers: Contra/English Country, 1st Friday of every month, American Legion Hall, 41 Linden Avenue, Newtown, PA, soft soled shoes only! Info 609/882-7733 or www.LambertvilleCountryDancers.org

Maplewood International Dancers: Thursdays 8pm, \$5, Burgdorff Cultural Center, 10 Durand Rd., Maplewood, NJ. Beginners welcome, partner not necessary, refreshments served. Call 973/627-4386 or 973/376-7568 or go to NJFolkdance.tripod.com/fd_maplewood.html

Morristown International Dancers: Wednesdays, 8:30pm (beginners 7:30pm), supporters \$5, others \$6 (first timers: free first visit), Mountain Lakes Community Church, 48 Briarcliff Rd., NJFolkdance.tripod.com/fd_morristown.html, 973/787-4614 or 973/228-5966

North Jersey English Country Dancers: 2nd & 4th Sundays, 2-5pm, Unitarian Society, 113 Cottage Pl., Ridgewood, NJ. \$10 members, \$15 non-members. More info: 201/657-9956 or 914/476-7102, www.NorthJerseyEnglishCountryDancers.org, or rbnrussell@gmail.com.

Palisades Folk Dancers: Twice a month on Sundays (except June to Aug.), 3pm, Church of the Atonement, Engle St. & Highland Ave., Tenafly, NJ, \$10, hal2dial@gmail.com

Princeton Folk Dance Group: Tuesdays (except school closings), 7:30pm, YWCA All Purpose Room, 59 Paul Robeson Place (at intersection with Rte. 206), Princeton, NJ, www.PrincetonFolkDance.org, 732/230-3755, 609/912-1272, tuesdaynightfolkdance@gmail.com.

Princeton Folk Dancers: Fridays, 9pm (teaching 8pm), Susan Patterson Center, Stockton St. and Monument Dr. (behind Borough Hall), Princeton, NJ, www.PrincetonFolkDance.org, 609/912-1272, friday@princetonfolkdance.org.

Princeton Country Dancers: Wed. (and most 4th Saturdays) 8pm (intro/basics 7:30pm), \$10 Wed., \$11 Sat. (\$5 seniors & students), Suzanne Patterson Center, 1 Monument Drive, Princeton, NJ behind the former Borough Hall/police station, near intersection of Routes 27 & 206, 609/844-0459 or 609/275-7275, e-mail pcdinfo@aol.com. Performer listing at www.PrincetonCountryDancers.org, pickup band musicians welcome.

PCD English Country Dance Series: 2nd Saturday, 8pm (intro/basics at 7:30pm). \$10 (\$5 seniors & students), www.PrincetonCountryDancers.org, 609/844-0459

Scottish Country Dancing: most Tuesdays except June through Aug., 7:30-10pm, Fanwood Presbyterian Church, 74 South Martine Avenue (at LaGrande Avenue), Fanwood, NJ, www.rscds-nj.org, 732/356-3923

Swingin' Tern: see page opposite

Valley Contra Dance Society: 2nd and 4th Saturdays, 7:30pm (lesson at 7pm), Unitarian Church of The Lehigh Valley, 424 Center Street, Bethlehem, PA. \$12 (\$5 students). www.ValleyContraDance.org, 610/868-7432, valleycontradance@verizon.net

Village Contra: 2nd Fri., 7:30pm, gender-role free contra dance in NYC., at LGBT Center, 208 W. 13th St., open to all. More info at www.VillageContra.org.



**Sat., Oct. 6:
Alexandra Deis-Lauby & Brooklyn Swing Ensemble**

Sam Zygmuntowicz: fiddle • Marco Brehm: bass • Danny Elias: clarinet • Danny Weiss: guitar

**Admission is FREE: a donation to Swingin' Tern is encouraged
Sponsored by Gail Yazersky in celebration of her milestone birthday**

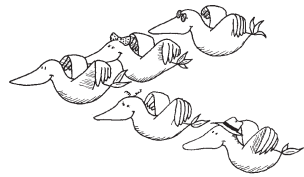
Would you like to swing like a star,
Carry music home in a jar,
For a great time come as you are,
Or would you rather be a tern?

A tern is a dancer with smiles on his face,
His feet always keep up the pace,
He has Brooklyn Swing to give him hot tunes,
With Alex calling contras for many moons,
If it's contras and good times for which you yearn,
You'll find you'd rather be a tern!

Sat., Oct. 20: Melanie Axel-Lute & Jigaplex

Matthew Christian: fiddle, mandolin, guitar, whistle, & small pipes • Colin Forhan: DADGAD guitar • Amy Beshara: fiddle

As they orchestrate our dance, Axel3-dayLute harps on clarion calling while Jigaplex works their fingers to the trombone. Don't find yourself in a piccolo by zithering around, call your partner on the xylophone and say cello for a harmonium evening • you'll avoid sax and violins along with a psalter and battery. Accordion to tradition, at the end of her performance, Melanie will balalaika diva



Non-dancing children must be supervised at all times.

**Contra and Square Dancing to Live Music. All dances taught.
No partner necessary. Beginners' lesson, 7:30pm;
dance at 8pm. \$12, \$5 with student I.D. Soft soles only.**

First Presbyterian Church of East Hanover

Parish House • 14 Hanover Road, East Hanover, NJ 07936

From I 287 northbound or southbound: Exit 39, travel East on Route 10 for approx. 3.5 miles. Exit by the Ford dealership ("To River Road/Okner Pkwy") onto Mount Pleasant Ave. Right at the second light onto Hanover Rd. then immediate left into the parking lot of the Parish House. From I 78: Exit 48 (Route 24 West) to Exit 2B, Route 510 East/Florham Park. Go 1.9 miles and turn left onto Hanover Rd. Turn right into the parking lot of the Parish House just before the road ends at Mount Pleasant Ave. Additional directions are on our website.

973/295-6864

TERN ON THE NET! Find us at <http://dance.folkproject.org>

Presented by the Folk Project

The Minstrel **October 2018**

Acoustic Concert Series presented by



**7:30 start
\$10 door**

Concerts every Friday at the Morristown Unitarian Fellowship

21 Normandy Heights Road, Morristown, NJ

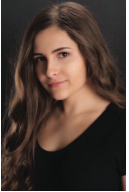
www.FolkProject.org • 973/335-9489 • Minstrel@FolkProject.org

Fri., Oct. 5: CLOSED for the Folk Project Fall Getaway

A fantastic acoustic music retreat where 150 music lovers and music makers share three concerts, 40 workshops, and endless jamming. See folkproject.org/festival.

Fri., Oct. 12: OpenStage (\$5 admission OpenStage only)

The Minstrel OpenStage is the place where a diverse collection of acoustic musicians performs for a welcoming, supportive, and attentive audience. We're a listening room, not a noisy bar. We've often seen previews of our regularly scheduled opening acts for the first time at our OpenStage. Admission is \$5 at the door but is free for anyone under the age of twenty-five. (Free-will donations are encouraged.) For information on how to sign up to perform at our next OpenStage, visit www.OpenStage.FolkProject.org. Featured artist: Jaclyn Fraser.



Fri., Oct. 19: Abbie Gardner (of Red Molly) with He Bird, She Bird



Abbie Gardner is best known to the Minstrel regulars as the Dobro player with the infectious smile from the group Red Molly. As a solo artist, she performs mostly her original songs of love and loss, both gritty and sweet, propelled by her clear and expressive vocals, and impeccable slide guitar playing. There's a pure Country feel to her delivery, channeling Lucinda and Bonnie, but remaining pure Abbie.

He Bird, She Bird is Todd Evans (resonator guitar), Terri Hall (percussion), and Christine Kellar (guitar). Their music is a mix of original, Americana, and bluesy songs with strong three-part harmony and a real sense of joy to the music. You can tell they're having fun on stage, and the fun is contagious.

Fri., Oct. 26: Member Concert—The Folk Project Halloween Party

\$12 admission this show only, refreshments included

This special Folk Project family show is all about the ghoulish and the garish, whimsical and wizardly. It's about music, fun, scares, and devilish delights. Come sing along, clap your claws, tap your toenails, and laugh at the funky costumes. Come dressed up yourself and most of all be prepared to have a howling good time. Sit a spell, cast a dance, whirl the evening away, and depart in a fog of hazy musical merriment. Join us! Questions? Contact Halloween@FolkProject.org.



Fri., Nov. 2: Magpie with Hal Guitarist

NOTE: This is Magpie's rain date after their scheduled March appearance was canceled due to the Nor'Easter



Greg Artzner and Terry Leonino have been married and performing together as **Magpie** for over 25 years. It only follows that their music as a duo is instinctively tight. Their vocal harmonies blend perfectly. Their instrumental work on guitar, mandolin, and harmonica is top notch. And their music ranges from '30s swing to environmentally and socially active folk music.

Hal Guitarist is a young singer who channels the songwriters who, at his age, formed the backbone of the socially conscious Folk movement of the early '60s. From Woody Guthrie to Bob Dylan to Phil Ochs, he convincingly delivers the classic songs with the freshness and fervor of those early pioneers of the movement, along with a few of his own compositions.

UPCOMING: 11/9 OpenStage; 11/16 The Shockenaw Mountain Boys; 11/23 Windborne with Maia McCormick; 11/30 Reeds, Rhythm, And All That Brass; 12/7 Chorus Song Night; 12/14 OpenStage; 12/21 Folk Project Holiday Show; 12/28 Karyn Oliver with Pepper & Sassafras; 1/4 Susan Werner with Zoe Mulford; 1/11 OpenStage

To volunteer, e-mail volunteers@folkproject.org

All Venues That Fit We Print

Please use contact information to verify dates and times of shows before you go

- Albert Hall/Sounds of the NJ Pines:** Country/bluegrass/folk 7:30 every Saturday. GPS address: 131 Wells Mills Rd. (Route 532), Waretown, NJ, 609/971-1593 or www.AlbertHall.org
- Birdhouse Center for the Arts:** 7 North Main St., Lambertville, NJ, 8pm, concerts, open folk jams, song circles, \$12, www.BirdhouseCenter.org, birdhousecenter@gmail.com, 609/397-3964; **Sun. 9/30** The Jellyman's Daughter, \$15, bluegrass, post-rock, folk, and soul
- Bluegrass & Old Time Music Assoc. (BOTMA):** every 3rd Sun. from Sept. thru May, Embury United Methodist Church Hall, 49 Church St, Little Silver, NJ. 1–5pm. \$4 for BOTMA members, \$5 non-members. Info: www.NewJerseyBlueGrass.org
- Boonton United Methodist Church:** open mic every 3rd Friday, 8pm, 626 Lathrop Avenue (corner of Vreeland Ave.), Boonton, NJ, free, office@boontonumc.com, 973/334-8275
- Borderline Folk Music Club:** Nanuet Public Library, 149 Church Street, Nanuet, NY, 1:30pm, \$25/\$20 members/\$3 online discount, www.BorderlineFolkMusicClub.org, intrend@yahoo.com, 845/510-9630; **Sun. 10/28** Scott Wolfson and Other Heroes with The Levins, special Halloween show
- Community Theatre at Mayo Performing Arts Center:** 100 South Street, Morristown, NJ, 8pm, www.MayoArts.org, info100@mayoarts.org, 973/539-8008; **Fri. 9/28** Pat Metheny, \$48–\$99; **Wed. 10/24** Gaelic Storm, \$29–\$69
- Earth Room Concerts:** Unitarian Universalist Congregation of Monmouth County, 1475 W. Front St., Lincroft, NJ, 7:30pm, \$20 advance/\$25 door, www.EarthRoomConcerts.org, 732/542-4127; **Sat. 10/13** Peter Mulvey
- Ethical Brew Coffeehouse:** Ethical Culture Society of Bergen County, 687 Larch Avenue, Teaneck, NJ, 8pm, \$20 online/\$25 at door, www.EthicalBrew.org, 201/836-5187; **Sat. 10/13** Split Bill—Carolann Solebello and Robinson Treacher
- Fanwood Performance Series:** Kuran Cultural Arts Center, 75 North Martine Avenue, Fanwood, NJ, 7pm, donation adult \$15, seniors/students \$10, www.FanwoodPerformanceSeries.org, info@fanwoodperformanceseries.org, 908/418-1301; **Sat. 10/13** Michael Coppola with Evan Salvacion
- Folk Arts Fridays at Ethical Culture:** 516 Prospect St., Maplewood, every 2nd Friday (except June–Sep.). Bring instruments and voices for singing, playing, quilting, crafts. Run by Lisa Novemsky and Anja Moen, www.EssexEthical.org, lnovemsky@comcast.net, 973/763-8293
- Folk Music Society of NY:** OSA Hall, 220 East 23rd St, Suite 707 (between 2nd and 3rd Aves), NYC, 7:30pm, Folk Project members pay the FMSNY member's price, \$25/members \$20, FolkMusicNY.org
- FP Fall Getaway:** North Jersey, the best three-day music party ever, three concerts, 40 workshops for musicians and listeners, jam sessions, food, lodging, and a friendly weekend community, folkproject.org/festival, getaway@folkproject.org; **Fri. 10/5** Jackie Bristow & Mark Punch, The Murphy Beds, Nikki Talley & Jason Sharp, Old Man Luedecke, Joshua Davis
- Godfrey Daniels:** 7 E. 4th St., Bethlehem, PA, 610/867-2390, www.GodfreyDaniels.org
- Good Coffeehouse:** The Good Coffeehouse at The Old Stone House, 336 3rd Street, Brooklyn, NY, doors open at 7:30pm, music at 8pm, 718/768-3195 or www.theOldStoneHouse.org
- Green Light Music Series:** Studio Yoga, 2 Green Village Road, 3rd Floor, Madison, NJ, 4pm, \$10 advance/\$15 door/\$10 students & seniors, www.StudioYogaMadison.com/events, staff@studioyogamadison.com, 973/966-5311; **Sun. 9/30** Andrew Dunn
- Hopewell Theater:** 5 South Greenwood Ave, Hopewell, NJ, 8pm, dine-in theater with small plate options, HopewellTheater.com/live/music, info@hopewelltheater.com, 609/466-1964; **Sat. 10/27** The Campbell Brothers; **Thu. 11/1** Dar Williams with Seth Glier
- Hurdy Gurdy Folk Music Club:** Fair Lawn Community Center, 10-10 20th Street, Fair Lawn, NJ, 8pm, \$20 advance/\$23 door, www.HurdyGurdyFolk.org, info@hurdygurdyfolk.org, 201/384-1325; **Sat.**

Flooded Pittsburgh Irish Festival

Dear Festival Supporter,

The team at the Pittsburgh Irish Festival works tirelessly to create an authentic event that showcases the best that the Irish culture has to offer. This year, we were pleased to be able to present a festival that even included Ireland's weather. Unfortunately, the luck of the Irish ran out and Mother Nature gave us a wee bit more than we were hoping for.

We received notice that the heavy rainfall would cause the river to rise and had to make the very difficult decision to cancel the last day of the festival. The safety of our patrons, volunteers, staff, vendors, and participants is paramount.

We have been overwhelmed by the love, support, and understanding of our community and can't express enough how grateful we are to our staff and volunteers who were able to clear out the Riverplex of necessary belongings, supplies, and equipment in under 12 hours.

The funds raised at the festival each year go directly towards our mission to preserve and promote the rich Irish culture that exists in our area. As a small nonprofit organization, the results of losing an entire day of the festival dealt a severe blow to our efforts. We'd like to extend a heartfelt thank you to those of you who have already made donations to support us. Plans for fundraisers that will feature the best you can expect from the Pittsburgh Irish Festival community are already in the works. In the meantime, we'd welcome any kind of support you can offer. If you'd like to make a donation, please click tinyurl.com/IF-FloodDonation.

We are honored to have had so many great sponsors, volunteers, vendors, and team members this year and were thrilled to have had two fantastic (albeit wet) days of the 28th Annual Pittsburgh Irish Festival. Mark your calendars for the 2019 festival, September 6–8.



The Philadelphia Folk School

Secure the Future of Folk Music

The Philadelphia Folk School provides music and instrument classes for people of all ages and skill levels! Have you been wanting to learn a new instrument? Or, perhaps, fine-tune some skills you already have? Well, the Philadelphia Folk School has exactly what you need: top-tier teachers, brand new classrooms, and a community of musicians and music lovers rooting for you every step of the way! Check out our website for a full listing of classes and information on registration!

- Sep. 24: Beginner Harmonica for Adults (13 and up), Monday, 6:30–7:45pm
- Sep. 24: Blues Harmonica 1 (13 and up), Monday, 8–9:15pm
- Oct. 10: Loony Tuners & Virtuosi Beginner Ukulele, Wednesday, 5:15–6pm
- Oct. 10: Beginner Ukulele for Adults, Wednesdays, 6:15–7pm
- Oct. 11: Beginner Guitar for Adults (13 and up), Thursday, 3–3:45pm
- Oct. 11: Intermediate Guitar for Adults (13 and up), Thursday, 4–4:45pm
- Oct. 20: Wee Folk, Saturday, 9–9:45am
- Oct. 20: PB & Jammers, Saturday, 10–10:45am

For more information, go to pfs.org and click on **Philadelphia Folk School**.

Banjo NewsLetter Subscription

The five-string banjo magazine with 45 years of continuous publication is now online at BanjoNews.com. Online subscription \$19.99; includes ten years of back copies.

For more information, contact 800/759-7425, spencer@banjonews.com.

Save a Tree—Sign up for E Newsletters

Our monthly newsletter is now available in electronic version. Advantages of receiving the E-Newsletter?

- ☛ You will receive it earlier each month
- ☛ The web and email links will be clickable
- ☛ It will be in color
- ☛ You will be less likely to misplace it
- ☛ You will save \$5 on your membership
- ☛ You will save the Folk Project almost \$1 per month
- ☛ This will save trees, energy, and reduce greenhouse gases

Sign up at enews.folkproject.org

Join the Folk Project

Mail with payment to:
FP Membership
c/o D L Graham
886 Ray Ave.
Union, NJ 07083

Choose at least one: New Renew Skip to my Lou
Name: _____ Home Phone: _____ Cell Phone: _____

Address: _____

E-mail 1: _____ E-mail 2: _____

Do you play or sing music?

- For fun Occasionally perform in public Professionally or semi-professionally
Help us save Trees and save Energy! Choose to receive your Newsletter via Email!

- Receive Monthly Newsletter via Email Receive Paper Newsletter

(Save \$5.00 from each membership category with our Go Green eNewsletter Discount!!!)

Please consider supporting the Folk Project with a Premium membership!

Choose your (fully tax deductible) membership category below:

Individual membership @ \$25/yr. (\$20 for Go Green eNewsletter!) \$ _____

Family membership @ \$30/yr. (\$25 for Go Green eNewsletter!) \$ _____

Names of additional family members: _____

- 'Bard'** Premium Membership @ \$50/yr. (\$40 is tax deductible)
Receive 1 special DVD featuring blues performances from Horses Sing None of It
- 'Balladeer'** Premium Membership @ \$100/yr. (\$80 is tax deductible)
Receive 2 special DVD featuring blues performances from Horses Sing None of It
- 'Troubadour'** Premium Membership @ \$250/yr. (\$200 is tax deductible)
Receive 5 special DVD featuring blues performances from Horses Sing None of It
- 'Star Performer'** Premium Membership @ \$500/yr. (\$400 is tax deductible)
Receive 10 special DVD featuring blues performances from Horses Sing None of It
- _____ Multiple Year Membership – (You do the math!)

Make your check payable to: The Folk Project. If membership in the Folk Project is important to you and you feel that you cannot afford our membership dues, please contact membership@folkproject.org for arrangements. The Folk Project is a 501(c)(3) Non-Profit. Donations to the Folk Project are Tax Deductible.

"...Horses Sing None of It!"

A folksy non-commercial public access TV series featuring a surprising variety of guest performers, hosted by Ralph Litwin. All types of mainly acoustic music, storytellers, dancers, others. Schedule available at www.folkproject.org. Watch archived shows on www.youtube.com/HSNOI. Seen on: Cablevision Morris (Ch.21), Bergen (Ch.77), and Oakland (Ch76), NJ, 7:30pm Sun.; Manhattan Neighborhood Network (MNN), New York City 2:30pm Thurs. on Time/Warner Cable Ch.56 & 1996, RCN Cable Ch.83 & FIOS Ch.33; also broadcast via streaming video on the web at www.MNN.org; Service Electric Cable TV, Allentown, PA (airing in 84 towns) Thurs. 9:30pm, Ch.50; Fargo Community Access 68 www.CityOfFargo.com/CityInfo/AccessTV/Access99schedule on channel 68 at 6:30pm Fridays & 3pm Mondays in Fargo, North Dakota; Comcast Central NJ 2, 3:30pm Friday, Ch.280, Simulcast on Comcast Northwest NJ (Hunterdon County area) Ch.21.



10/6 Tom Chapin, \$25 advance/\$28 door, tickets from the April 7 show will be honored at this show; **Sat. 11/3** Dave Rowe & Kendall Morse

Morristown Uke Jam: Ukulele playalong and jam, 7pm, every 1st Wed at South Street Creamery, 146 South Street, Morristown (on the Green in warm weather). Info: www.meetup.com/MorristownUkeJam, Mark 973/978-0751, MorristownUkeJam@gmail.com

NJ Friends of Clearwater Circle of Song: Eatontown Library, 33 Broad Street (Route 71), Eatontown, NJ, 2–4pm, audience members can also do a number or two, \$3–\$7, www.IngridMusic.com, 732/869-9276; **Sun. 10/7** Linda Ershow-Levenberg

NJAMP Acoustic Jams: in Somerville every Thursday, 6pm, Mannion's, 150 West Main St., Somerville, in Matawan every other Wednesday, 6pm, Maloney's, 119 Main Street, Matawan, 908/203-9700, www.meetup.com/NJ-Acoustic-Music-in-the-Park

The Newton Theatre: Skylands Performing Arts Center, 234 Spring Street, Newton, NJ, 8pm, www.TheNewtonTheatre.com, info@thenewtontheatre.com, 973/383-3700; **Fri. 9/28** The Weepies, \$29–\$44; **Sat. 9/29** Robby Krieger, \$39–\$54, from The Doors; **Fri. 10/26** The Wailers, \$34–\$49

Outpost In The Burbs: First Congregational Church, 40 South Fullerton Ave, Montclair, NJ, 8pm, \$22 advance/\$25 door, www.OutpostInTheBurbs.org, info@outpostintheburbs.org, 973/744-6560; **Sat. 9/29** James Maddock and Band, \$28 advance/\$32 door; **Fri. 10/12** The Jayhawks with Harrow Fair, \$40 advance/\$45 door; **Sat. 11/3** The Lone Bellow with Naia Izumi, \$40 advance/\$45 door

People's Voice Cafe: Community Church of New York Unitarian Universalist, 40 East 35th St., New York, NY, 8pm, \$20 contribution/\$12 members, www.PeoplesVoiceCafe.org, 212/787-3903; **Sat. 9/29** Elias Ladino Ensemble with Mara Goodman; **Sat. 10/6** Goldee Green with Kevin Nathaniel Hylton; **Sat. 10/13** Dilson Hernandez with Ben Grosscup; **Sat. 10/20** Thea Hopkins with Marie Mularczyk O'Connell & The Mountain Maidens; **Sat. 10/27** Aaron Fowler with Joel Landy; **Sat. 11/3** Ivy & Miranda with Magpie

Princeton Folk Music Society: Christ Congregation Church, 50 Walnut Lane, Princeton, NJ, 8:15pm, \$20, members \$15, students 12–22 \$10, children \$5, www.PrincetonFolk.org, info@princetonfolk.org, 609/799-0944; **Fri. 10/19** Sarah McQuaid, British/American singer-songwriter

Riverside Rhythm & Rhyme: Roxbury Performing Arts Center, 72 Eyland Ave, Succasunna, NJ, 4pm, an activity of the Skylands Songwriters Guild, \$20 advance/\$15 members/free under 18/\$22 door, SkylandsSongwriters.org/rr-r; **Sun. 10/21** Margo Hennebach & Mark Saunders

Roy's Hall: 30 Main Street, Blairstown, NJ, 8pm, \$25, RoysHall.com, 908/362-1399; **Fri. 9/28** Chris Smither, \$27.50; **Sat. 9/29** Iris DeMent with Pieta Brown, \$35–\$40, grounded in hymns, early country songs, gospel and folk; **Sat. 10/13** Durham County Poets, \$25–\$30, bluesy soul/folk from Québec

Sacred Harp Singings: Much info at www.fasola.org, 2nd Sun.: 2pm, St. Paul's Church, 199 Carroll St., Brooklyn. 718/293-2848, 4th Sun., 2pm, Montclair Friends Mtg., Park & Gordonhurst. 973/509-2165, Midweek singing Wednesdays, 7–9:30pm, St. John's Lutheran Church, 81 Christopher St. (bet. Bleecker & W. 4th Sts., near 7th Ave. S.), Greenwich Village, www.NYCSacredHarp.org/localsingings.html

Songwriting Circle of Central NJ: Every other week in the Edison, NJ area (exact location depends on weather). Go to facebook.com/groups/songwriting.circle.nj or email neilfein@gmail.com for more information.

Stony Brook Friends of Old Time Music Jam: Mannion's Pub & Restaurant, 140 West Main Street, Somerville, 7:30pm every 1st Tuesday., 609/924-5353 or visit www.DiamondCut.com/oldtime

Walkabout Clearwater Coffeehouse: Memorial United Methodist Church, 250 Bryant Ave., White Plains, NY, 7:30pm, Walkabout Chorus "Teachabout" at 6:45pm, \$20 advance/\$25 door, www.WalkaboutClearwater.info, info@WalkaboutClearwater.info, 914/949-2146; **Sat. 10/13** Magpie

Woodbridge Wednesdays: Parker Press Park, 400 Rahway Avenue, Woodbridge, NJ, 7:30pm, food trucks, craft beer, wine available, bring a lawn chair, free, www.WoodbridgeArtsNJ.org/woodbridge-wednesdays.html; **Wed. 9/5** Split Bill—Denise Reis Trio and Karikatura

Watchung Arts Center: 18 Stirling Rd, Watchung, NJ, 8pm, \$18 advance/\$22 door/\$10 students, www.WatchungArts.org, WACenter@optonline.net, 908/753-0190; **Fri. 10/5** Rio Clemente, piano jazz; **Sat. 10/13** Chip Mergott & Alan LeBoeuf

All Instruments Workshop by mandolin wiz Don Julin

JAMMING FOR DUMMIES: EVERYONE CAN IMPROVISE!

Saturday October 27, 1:30PM

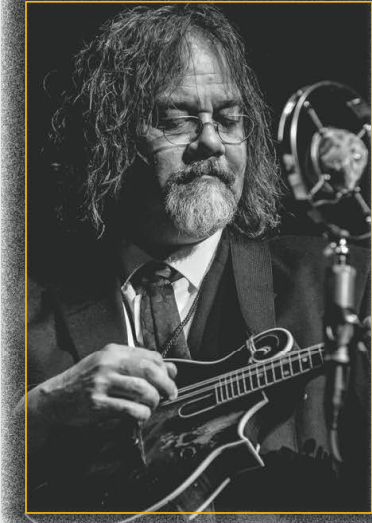
New Providence, NJ • \$40

(address to be sent after registration)

Ever wonder how some musicians can just make up solos on the spot? This workshop explains some of the basic elements of the language of the improviser including two common types of improvisation used in a variety of musical styles: improvising based on the melody and improvising based on the chord structure. This workshop is open to all levels and can be useful to all instrumentalists.

Registration: folkproject.org

For more information email concerts@folkproject.org



MUF Annual Service Auction

Have you got something to offer?

The Morristown Unitarian Fellowship, venue for our Minstrel Concert Series, is accepting submissions for its annual service auction through October 14. Categories include services (such as musical events or entertainment), handmade items and homemade foods. You can read the details and access the online submission form at muuf.org/service-auction. The live auction and start of the silent auction will be November 3.

Old Issues of SingOut Magazine

Free Back Issues Available

Arlene Miller and Pete Kernast of the Princeton Folk Music Society have some old issues of SingOut magazine that they would be happy to give to anyone who wants them. Call 609/799-0009 for Arlene or 609/918-2430 for Peter.

Unclassified Ads

Hardman upright piano: Brenda Villano has a Hardman upright piano that she'd like to sell/find a good home for. The buyer would be responsible for moving (from Bridgewater, NJ) and tuning. If interested, call 908/295-2237 or send email to bsv1102@aol.com.

Acoustic bass box: Free to a good home! Those who claim to have every weird instrument ever made probably don't have an acoustic bass box. Imagine a kalimba (a.k.a. thumb piano) on steroids that reproduces the sound of a standup bass. The box is made of wood, measures 22"x16"x8", is lightweight and portable. You sit on it to play, and it's very easy to learn how. For more info, pictures, etc. check out www.bassbox.org. This instrument belonged to George Miller, a Folk Project member who died in 2006. If interested call Margaret Crowl, 973/585-4666, or email CROWLmargaret@aol.com.

OLD BUSINESS

Elizabeth Lachowicz and Dave Heistand reported on their research concerning the Board's efforts to improve collegiality and communications skills among Board members, to culminate in a Board retreat. They have spoken extensively with Bill Pawlucy, a consultant who specializes in nonprofit boards. Elizabeth noted that "strong feelings" on the part of Board members have gotten in the way of everyone's desire to advance the good of the Project, and that an outside opinion would help in resolving ongoing issues. Dave noted that working with a consultant will involve a substantial commitment of time, work, and money, but will be well worth it. Lively and supportive discussion ensued, and Dave and Elizabeth will continue their research.

While President Steve had hoped to hold the retreat this year, he recognized that considerations of time and the value of including next year's new Board members in the process may dictate doing so next year.

NEW BUSINESS

In Secretary Jay Wilensky's absence [curse you, tire gremlins! sec'y], after a discussion led by President Steve Humphreys, George Otto moved the formation of a Nominations Committee, chaired by Jay, to select a slate of officers and trustees for next year to be voted on at the Annual Meeting in December. The motion passed, and the Nominations Committee will consist of Jay, Jean Scully, Mike Agranoff, Olga Alvarez, Lois DeRitter, and Steve Humphreys.

Steve noted that Chimney Rock, Gillette, where the annual Board dinner/meeting has been held, was overly noisy last year. George Otto replied that we are not locked into Chimney Rock, and alternatives were discussed.

ONWARD!

The meeting was adjourned at 9:57pm. The next meeting will be held on October 2, 2018, at Marie Trontell and Jay Wilensky's Western Outpost and Saloon. All members are welcome; e-mail secretary@folkproject.org for details.



Good o' the Order

*A place to share news with your Folk Project Community about memorable events and challenges.
Please send items to Joanne Cronin, joannelcronin@optonline.net*

Frank Sole: I went to Frank Vignola's guitar camp in August and at the end of camp he hired me to teach at next year's camp.

John Mahon taught at a recent bluegrass festival and was invited back.

Elizabeth Lachowicz, after her triumphant Betsy Rose & Chicago Fire performance at Minstrel, will be bopping back and forth with son **Thomas Lachowicz** visiting family in Chicago before Thomas reports for service in the Navy.

Mark Schaffer is excited about upcoming "Strummin' With..." shows with Toby Walker and others.

Sandie Reilly continues her rewarding training of disabled bicyclists.

Steve Humphreys is cosponsoring a backyard barbecue fundraiser for Congressional candidate Mikie Sherrill in Randolph on September 23 from 3–6pm. Music will be provided by Carrie Cantor and Friends and the Blue Planet Band.

Olga Alvarez just returned from a visit to her 96(?)-year-old mother in Florida. Her mom is still working, active, and sharp as a tack.

Jean Scully reports that **Von Scully** has landed an environmental internship in NJ that will keep him in the States for at least a year. And living at home—but doing what he loves and has studied.

Folk Project Board Meeting • September 4, 2018

Board Meeting: The Summary

The September 4, 2018 meeting was called to order at 8pm, at Steve Humphreys' Executive Mansion.

Present: Steve Humphreys, Christine DeLeon, Dave Heistand, Ken Brody, Evelyn McNally, Olga Alvarez, Elizabeth Lachowicz, Bob McNally, Kathi Caccavale (officers and trustees); Lois DeRitter, Mark Schaffer, Sandie Reilly, Jean Scully, Joanne Cronin, Mike Agranoff, George Otto, Paul Fisher, John Mahon (committee chairs). **Absent:** Allan Kugel, Jay Wilensky, Chris Riemer, Pam Robinson, Leigh Walker, Mitch Radler, Lindsey Meyer. **Guests:** John Lamb, Lori Falco, Pat Brangs.

MOTIONS

The minutes of the July 3, 2018 Board meeting, as amended, were accepted.

A Nominations Committee was created under the chairmanship of Jay Wilensky to recommend a slate of new directors and trustees to be voted on at the Annual Meeting in December.

ADMINISTRATIVE REPORTS

President: Steve Humphreys reported that he is contemplating assembling a "Board Book," delineating the proper role of Board members, and may do so after his term as President. Steve hopes that the book will encourage Board members to concentrate their efforts on issues affecting the Folk Project as a whole. In this connection, Steve also asked that Board members avoid questioning venue chairs and volunteers about operational aspects of their programs in emails to the entire Board, as doing so tends to unfairly place the recipients in a negative light. Lively discussion ensued; there is a consensus that Board members should not unduly interfere with the venue chairs' functions, although both Mike Agranoff and Mark Schaffer noted the importance of venue chairs being able to seek Board feedback on significant issues. [This issue dovetails with Old Business, below, sec'y]

COMMITTEE REPORTS

Sound Reinforcement: Chair John Mahon reported that he is fine-tuning the [already excellent, sec'y] sound in the hall and that the quality of Concert Window simulcasts continues to improve.

Special Concerts/Uke Fest: President Steve led congratulations and rousing applause for Chair Pam Robinson following August's highly successful Uke Fest.

Getaway: Chair Mark Schaffer reported that sales for the Fall Getaway are in a not-unusual summer slump, and he will step up preparations during September. He noted that Spring Getaway will be held on May 17-19, 2019, a week earlier than usual.

Minstrel Staffing: Chair Jean Scully noted ongoing problems with filling all the volunteer positions. While she is not sure of the reasons, she suggested that the pitch-in spirit of Minstrel may be reduced because the hall does not need to be set up for shows. Publicity Chair Paul Fisher suggested having volunteers sign up for multiple, fixed dates rather than for a single show, and Jean was receptive. Mark S. noted that OpenStage is asking volunteers to sign up for permanent slots, and Jean suggested that OpenStage seems to have developed the spirit of the old Minstrel.

Publicity: Chair Paul Fisher reported that Lori Falco is stepping down from her responsibility for Electronic Communications. The Board warmly applauded Lori for her accomplishments.

Minstrel Booking: Chair Mike Agranoff reported that he is looking into advance ticket sales. Lori F. noted that doing so would affect other venues and functions and asked that it be considered carefully so that it does not result in an increased burden for FP volunteers. Mike noted that during a week in which no one volunteered for the Bookkeeper slot, he was able to pay the artists but perform the remaining Bookkeeper functions at home. [This was a good save, not a good alternative, sec'y].

OpenStage: Mark Schaffer reported that he is pinch-hitting while OS Chair Mitch Radler attends to family responsibilities. President Steve lauded the teamwork.

Community Services: Co-chair Pat Brangs reported on the sad and the happy: Grover Kemble lost his sister; and long-time Projectiles Chris Riemer and Judy Felton Storey were married.

Members' Gigs (& Friends)

Please use contact information to verify dates and times of shows before you go

Mike Agranoff (www.MikeAgranoff.com, mike@mikeagranoff.com): **Fri. 10/19** 7:30pm, 333 Coffeehouse, Annapolis Friends Meeting House, 351 Dubois Road, Annapolis, MD, 333concerts.org, 333coffeehouse@gmail.com, 443/333-9613, \$12/\$10 for seniors, students, and members; **Sat. 10/20** 7:30pm, Fractal House Concerts, a private home, Arlington, MA, ultimatepsi@gmail.com, 781/248-7400, suggested donation \$15-\$20, call or email for reservations and directions; **Sun. 10/21** 6:30pm, Concerts in the Captain's Mansion, a house concert in a historic B&B, New Bedford, MA, inovator@comcast.net, 203/499-8862, suggested donation \$15-\$20, call or email for reservations and directions, the concert will be followed by an informal jam-session/song-circle for all who care to participate; **Thu.-Mon. 10/25-10/29** FARM (Folk Alliance, Region Midwest), performing Thur. night 11:30pm, Fri. morning 1:20am, Sat. morning 1:30am, Sun morning 1am, Crowne Plaza Airport Hotel, 5700 28th St SE, Grand Rapids, MI, FarmFolk.org, pumphouseconcerts@gmail.com, a four-day extravaganza of showcases, workshops, panels, and schmoozing

Christine DeLeon (www.ChristineDeLeon.com, christine@christinedeleon.com): **Tue. 10/2** 1:30pm, North Haledon Public Library, "Song and Dance of the Roaring Twenties," 129 Overlook Avenue, North Haledon, NJ, NorthHaledonLibrary.org, 973/427-6213, free; **Thu. 10/18** 7pm, Pequannock Township Public Library, "Song and Dance of the Roaring Twenties," 477 Newark Pompton Turnpike, Pompton Plains, NJ, PequannockLibrary.org, 973/835-7460, free; **Tue. 10/23** 1pm, Mendham Borough Public Library, "Song and Dance of the Roaring Twenties," 10 Hilltop Road, Mendham, NJ, MendhamBoroughLibrary.org, 973/543-4152, free; **Tue. 10/23** 6:30pm, Rockaway Township Public Library, "Song and Dance of the Roaring Twenties," 61 Mt. Hope Road (Note: NOT "AVENUE"), Rockaway, NJ, RTLlibrary.org, 973/627-2344, free

Dara Diamant (daradiamantsilverberg@gmail.com): **Sun. 10/7** 7:30pm, Themestock VII, an over four-hour show featuring songs related to one single theme (this year's being Anatomy), Smith's Olde Bar, 1578 Piedmont Ave. NE, Atlanta, GA, \$10 advance/\$15 door, all performers are members of the international Theme Music Facebook group

John Hone (john.hone1@gmail.com): **Sun. 10/14** 2pm, Crossroads Bar, with The Scotch Plainsmen, a tribute to Pat Dinizio of the Smithereens, 78 North Ave, Garwood, NJ, xxRoads.com, leexroads@aol.com, 908/232-5666, ticket sales will go to a music scholarship in Pat's name

Mara Levine (www.MaraLevine.com, marablevine@gmail.com, 732/549-9722): **Fri. 9/28** 7:30pm, Stone Cottage Pub, opening with Gathering Time, 3750 Kingston Road, Scarborough, Toronto, ON Canada, www.StoneCottagePub.com, 416/265-7932, concert \$20/with dinner \$40, dinner starts at 5:30pm, afterparty in pub downstairs; **Sat. 9/29** 8pm, Auer House Concerts, with Gathering Time, private home, Toronto, ON Canada, email auerworld@gmail.com for reservations and directions

Long Hill String Band (with Bob Safranek): **Sat. 9/29** 1pm, Baronfest, A Festival of Music, Beer & Food, Historic New Bridge Landing, 1201 Main Street, River Edge, NJ, www.BergenCountyHistory.org, celebrate Revolutionary War hero Major-General Baron von Steuben's birthday and greet the Baron in person!

Katherine Rondeau (www.KatherineRondeau.com, showrondeau@gmail.com, 609/432-9127): **Sat. 10/6** 8pm, Circle of Friends Coffeehouse, performing with Joe Jencks, First Universalist Society Meetinghouse, 262 Chestnut St., Franklin, MA, CircleFolk.org, 508/528-2541; **Sat. 10/20** 8pm, The Locks at Sona, performing with Matt Portella, 4417 Main Street, Philadelphia, PA, 833/533-0330, eventbrite.com/o/the-locks-at-sona-17578213147

The person who says it cannot be done should not interrupt the person who is doing it.

—Chinese Proverb

FP Calendar: October 2018

For venue addresses & contact information, see [Venues, Feets, or Gigs](#)

Please use contact information to verify dates and times of shows before you go

2/Tues. FP Board Meeting: 8pm, at Marie Trontell & Jay Wilensky's in Whitehouse Station

EVERY TUESDAY: 7pm, Northwest NJ Acoustic Jam. Westside United Methodist Church, Hopatcong. 973/770-0179

EVERY 1ST TUESDAY: 7:30pm, Stony Brook Friends of Old Time Music Jam, Mannion's, Somerville, www.DiamondCut.com/oldtime, 609/924-5353

Christine DeLeon: 1:30pm, North Haledon Public Library, "Song and Dance of the Roaring Twenties," North Haledon, NJ, NorthHaledonLibrary.org, 973/427-6213, free

3/Wed. EVERY WEDNESDAY: 7:30pm, Morristown Int'l Dancers. Mountain Lakes Community Church. 973/228-5966, NJFolkdance.tripod.com/fd_morristown.html

EVERY WEDNESDAY: 8pm, Princeton Country Dancers, Contra Dance, \$10 (\$5 seniors & students). More info on [Dance page](#).

EVERY 1ST WEDNESDAY: 7pm, Folk Open Sing. Ethical Culture Society, 53 Prospect Park West, Brooklyn. 212/636-6341 or 718/788-7563

EVERY 1ST WEDNESDAY: 7pm, Morristown Uke Jam; meetup.com/MorristownUkeJam; Mark 973/978-0751, MorristownUkeJam@gmail.com

ALTERNATE WEDNESDAYS: 6pm, Maloney's NJAMP Acoustic Jam. Matawan. 908/203-9700; meetup.com/NJ-Acoustic-Music-in-the-Park

4/Thur. EVERY THURSDAY: 6pm, Mannion's NJAMP Acoustic Jam. Somerville. 908/203-9700; meetup.com/NJ-Acoustic-Music-in-the-Park

EVERY THURSDAY: 8pm, Maplewood International Dancers. Maplewood, njfolkdance.tripod.com/fd_maplewood.html

5/Fri. FP Fall Getaway (see page 2)

Minstrel: CLOSED for the Folk Project Fall Getaway

Watchung Arts Center: 8pm, Rio Clemente, \$18 advance/\$22 door/\$10 students, piano jazz

6/Sat. Swingin' Tern: Alexandra Deis-Lauby & Brooklyn Swing Ensemble

EVERY SATURDAY: CD*NY: 8pm, Contra dances. NYC, www.cdn.org

Katherine Rondeau: 8pm, Circle of Friends Coffeehouse, performing with Joe Jencks, First Universalist Society Meetinghouse, Franklin, MA, CircleFolk.org, 508/528-2541

Hurdy Gurdy Folk Music Club: 8pm, Tom Chapin, \$25 advance/\$28 door, tickets from the April 7 show will be honored at this show

People's Voice Cafe: 8pm, Goldee Green with Kevin Nathaniel Hylton, \$20/\$12 members

7/Sun. EVERY SUNDAY: 7pm, Music You Can't Hear on the Radio. WPRB 103.3FM; www.wprb.com

EVERY SUNDAY: 8–10am, Radio Nowhere. WMSC 90.3FM Montclair or streaming at www.wmscradio.com

Dara Diamant: 7:30pm, Themestock VII, an over four-hour show featuring songs related to one single theme, Smith's Olde Bar, Atlanta, GA, \$10 advance/\$15 door,

NJ Friends of Clearwater Circle of Song: 2–4pm, Linda Ershow-Levenberg, \$3–\$7, audience members can also do a number or two

10/Wed. EVERY 2ND WEDNESDAY: 6:30pm, Central NJ Song Circle. Railside Café (formerly Mara's), 250 South Ave, Fanwood, NJ. www.facebook.com/CentralNJSongCircle

12/Fri. Minstrel: OpenStage

Outpost In The Burbs: 8pm, The Jayhawks with Harrow Fair, \$40 advance/\$45 door

13/Sat. FP Evening of Music: 8pm, Marie Trontell & Jay Wilensky's in Whitehouse Station

EVERY 2ND SATURDAY: 8pm, Princeton Country Dancers, English Country Dance, \$10 (\$5 seniors & students). More info on [Dance page](#).

Earth Room Concerts: 7:30pm, Peter Mulvey, \$20 advance/\$25 door

Ethical Brew Coffeehouse: 8pm, Split Bill—Carolann Solebello and Robinson Treacher, \$20 online/\$25 at door

Fanwood Performance Series: 7pm, Michael Coppola with Evan Salvacion, donation adult \$15, seniors/students \$10

People's Voice Cafe: 8pm, Dilson Hernandez with Ben Grosscup, \$20/\$12 members

Roy's Hall: 8pm, Durham County Poets, \$25–\$30, bluesy soul/folk from Québec

Walkabout Clearwater Coffeehouse: 7:30pm, Magpie, \$20 advance/\$25 door

Watchung Arts Center: 8pm, Chip Mergott & Alan LeBoeuf, \$18 advance/\$22 door

14/Sun. John Hone: 2pm, Crossroads Bar, with The Scotch Plainsmen, a tribute to Pat Dinizio of the Smithereens, Garwood, NJ, xxRoads.com, 908/232-5666

15/Mon. Newsletter Deadline: Send stuff to newsletter@folkproject.org

18/Thur. EVERY 3RD THURSDAY: 6:30–8pm, Thursday Night Sing Along, Sussex-Wantage Library, Wantage, NJ, www.FriendsOfSWLibrary.org

Christine DeLeon: 7pm, Pequannock Township Public Library, "Song and Dance of the Roaring Twenties," Pompton Plains, NJ, PequannockLibrary.org, 973/835-7460, free

19/Fri. Minstrel: Abbie Gardner with He Bird, She Bird

Mike Agranoff: 7:30pm, 333 Coffeehouse, Annapolis, MD, 333concerts.org

Princeton Folk Music Society: 8:15pm, Sarah McQuaid, \$20, members \$15, students 12–22 \$10, children \$5, British/American singer-songwriter

20/Sat. Swingin' Tern: Melanie Axel-Lute & Jigaplex

Mike Agranoff: 7:30pm, Fractal House Concerts, a private home, Arlington, MA, ultimatepsi@gmail.com, 781/248-7400, call or email for reservations and directions

Katherine Rondeau: 8pm, The Locks at Sona, performing with Matt Portella, 4417 Main Street, Philadelphia, PA, 833/533-0330, eventbrite.com/o/the-locks-at-sona-17578213147

People's Voice Cafe: 8pm, Thea Hopkins with Marie Mularczyk O'Connell & The Mountain Maidens, \$20 contribution/\$12 members

21/Sun. Mike Agranoff: 6:30pm, Concerts in the Captain's Mansion, a house concert in a historic B&B, New Bedford, MA, call or email for reservations and directions

Riverside Rhythm & Rhyme: 4pm, Margo Hennebach & Mark Saunders, \$20 advance/\$15 members/free under 18/\$22 door, an activity of the Skylands Songwriters Guild

23/Tues. Christine DeLeon: 1pm, Mendham Borough Public Library, "Song and Dance of the Roaring Twenties," Mendham, NJ, MendhamBoroughLibrary.org, 973/543-4152, free

Christine DeLeon: 6:30pm, Rockaway Township Public Library, "Song and Dance of the Roaring Twenties," Rockaway, NJ, RTLlibrary.org, 973/627-2344, free

24/Wed. Community Theatre at Mayo Performing Arts Center: 8pm, Gaelic Storm, \$29–\$69

26/Fri. Minstrel: Member Concert—The Folk Project Halloween Party

The Newton Theatre: 8pm, The Wailers, \$34–\$49

27/Sat. FP All Instruments Workshop: 1:30pm, Jamming for Dummies (see page 6)

ALMOST EVERY 4TH SATURDAY: 8pm, Princeton Country Dancers, Contra Dance, \$11 (\$5 seniors & students). More info on [Dance page](#).

Hopewell Theater: 8pm, The Campbell Brothers, dine-in theater with small plate options

People's Voice Cafe: 8pm, Aaron Fowler with Joel Landy, \$20 contribution/\$12 members

28/Sun. FP Strummin' with Mile 12: 2pm, Rockaway, NJ (see page 2)

EVERY 4TH SUNDAY (EXCEPT JULY AND AUGUST): 2–5:30pm, Sacred Harp Singing, Montclair Friends Meeting House, 289 Park Street, Upper Montclair, NJ; gssh.hostoi.com

Borderline Folk Music Club: 1:30pm, Scott Wolfson and Other Heroes with The Levins, \$25/\$20 members/\$3 online discount, special Halloween show