



Newsletter submissions: George Otto
 E-mail: newsletter@folkproject.org
 582 Long Hill Road, Gillette, NJ 07933
Deadline is the 15th

Membership, corrections/changes: Gary Pratt
 E-mail: membership@folkproject.org

Mail renewal checks to:
 FP Membership, c/o D. L. Graham
 886 Ray Avenue, Union, NJ 07083

Folk Project Officers:

President: Elizabeth Lachowicz
 Vice President: Paul Fisher
 Secretary: Jeff Canter
 Treasurer: Peggy Kairr



Trustees:

Trustees thru 2021: Todd Dennison, Lois DeRitter, Elizabeth Lachowicz
 Trustees thru 2022: Paul Fisher, Allan Kugel, Evelyn McNally
 Trustees thru 2023: Joe Guzzo, Diane Polledri, Pamela Zave



facebook.com/FolkProject



twitter.com/TheFolkProject



youtube.com/c/FolkProjectVideo



The Folk Project

July 2021

www.FolkProject.org



Please note that the events, dates, and times reported in this newsletter were accurate at the time of publication, but because of the evolving changes owing to the COVID-19 situation, we recommend that you use any contact information provided to determine whether such activities have been canceled or postponed before you go.

Folk Project July 4 Picnic

Sun., Jul. 4, Lewis Morris Park, Sugarloaf A, 1–6pm

RSVP REQUIRED

The July 4 picnic is a GO! We'll hold it on (yes...), July 4, at the **Sugarloaf A** field in beautiful Lewis Morris Park, 270 Mendham Road, Morristown. We'll officially party from 1–6pm, and the field will be available until dusk. There's plenty of parking on-site, and the area is handicap-accessible. Bring chairs, acoustic instruments (the site does not have electric power), refreshments, and smiles.

The area has a shelter; a charcoal grill; real, live restrooms; and a wide-open field suitable for song circles, frisbee-flipping, jousting, banjo-tossing, cow-tipping, etc. I'm hoping that we can run an open stage. And, we'll provide burgers and hot dogs (regular and veggie) and condiments, and gladly grill any items you may bring.

Because Covid is still with us, we'll have some new rules and guidelines. The first rule is
 NO VAXX, NO PICNIC—NO EXCEPTIONS.

We'll have a sign-in sheet, and the signature will affirm that the signer is vaccinated. We'll limit attendance to 50 souls, to avoid crowding. And we'll ask that, other than the burgers and dogs, you BRING YOUR OWN REFRESHMENTS—no communal table.

Beyond that, we'll just encourage common-sense behavior; small song-circles, no crowding in the shelter, social distancing everywhere. And we'll MAKE MUSIC AND HAVE FUN!

Because of the crowd limit, please let me know if you plan to attend, at jay.wilensky@folkproject.org. There should be plenty of room for everyone who replies.

HAPPY DAYS ARE (mostly) HERE AGAIN!

—Jay Wilensky, Event Hosting Sub-Chair and Chief Nic-Picker



QUICK GUIDE TO THE INSIDE

Stayaway Virtual Song Circle.....	2
NJ Uke Fest is Ba-a-a-ack!	2
A Word from Our Leader	6
Look Who's Coming to FPTV Soon!.....	6
59½ Annual Philadelphia Folk Festival	6
Members' Gigs (& Friends)	7
Troubadour Acoustic Concert Series Resumes.....	7
Woodbridge Summer Concerts.....	9
Board Meeting: The Summary.....	10
Good o' the Order	11

NOTE: web links in the eNewsletter are clickable

Stayaway Virtual Song Circle

Monday, 7–9:30pm • Zoom



When the world went kablooeey, we started the Stayaway Monday Zoom song circle as a way to keep the flame lit, give a few of our members the chance to play and hear a few songs, and have some (virtual) human contact during a time of isolation.

Over sixty circles later, it's become a continent-wide tribe of genuine friends: professionals sharing their gifts; amateurs playing better than they could ever have imagined; listeners and even lurkers just taking in the music and the warmth; and special guests such as **Buddy Mondlock** (photo), **Laurie MacAllister**, **Peppino D'Agostino**, and **Cliff Eberhardt** blowing us away. Many circles have said it's the high point of their week; one of our most accomplished players called it his "church"; another called it "the coolest open mike anywhere."

This ain't just braggin'. It's a reason and an invitation for any and every Projectile to check in and join us, 7–9:30pm every Monday night on Zoom at stayaway.FolkProject.org.

—Jay Wilensky, Event Hosting Sub-Chair and Proud Papa

NJ Uke Fest is Ba-a-a-a-ack!

NJ Uke Fest, Aug. 20–22, is proof that the world and the Folk Project are climbing back to normal inch-by-inch. In the case of the ukulele, maybe it's millimeter-by-millimeter. This "house concert" version in Rockaway will be limited to 50 vaccinated guests, but the joy, talent, learning, and experience delivered will be unlimited and beyond wonderful. Three days of concerts, workshops, and play-alongs will cost a mere \$85.



At Friday evening's concert, **Jim Boggia** will present Bruce Off Broadway, his ukulele tribute to Bruce Springsteen. Project favorite **Christine DeLeon** will open with her gorgeous voice, splendid uke playing, and a mix of originals, popular tunes, and gems from the 1920s.

Saturday's performers and workshop instructors include luthier, sophisticated arranger, complex finger-picking artist, and Ukulele Album of the Year nominee **Christopher Trietsch**; author, composer, luthier, and world-touring ukulelist **Jim Beloff**; multi-instrumentalist, songwriter, and intricate jazz arranger **Christopher Davis-Shannon**, and exquisite singer, delicate songwriter, and unique harp ukulele connoisseur **Gracie Terzian**.

On Sunday we host our traditional outdoor sing-along/play-along. See FolkProject.org for details and ticket purchase. Questions? Email concerts@folkproject.org.

New Open Mic in Madison

Musicians of all types wanted and welcome to an open mic every Tuesday at Daddy Matty's BBQ & Catering, 6 Elmer St, Madison, NJ. Phone: 973/295-6996

Dance, Dance, Dance

Country Dance*New York: Contra every Sat., English Country every Tues., Church of the Village, 201 West 13th St. (NW corner of 7th Ave.), except July and Aug., www.cdny.org or 212/459-4080

Lambertville Country Dancers: English Country, 1st Friday of every month, American Legion Hall, 41 Linden Avenue, Newtown, PA, soft soled shoes only! Info 609/882-7733 or www.LambertvilleCountryDancers.org

Maplewood International Dancers: Thursdays 8pm, \$5, Burgdorff Cultural Center, 10 Durand Rd., Maplewood, NJ. Beginners welcome, partner not necessary, refreshments served. Call 973/627-4386 or 973/376-7568 or go to NJFolkdance.tripod.com/fd_maplewood.html

Morristown International Dancers: Wednesdays, 8:30pm (beginners 7:30pm), supporters \$5, others \$6 (first timers: free first visit), Mountain Lakes Community Church, 48 Briarcliff Rd., NJFolkdance.tripod.com/fd_morristown.html, 973/787-4614 or 973/228-5966

North Jersey English Country Dancers: 2nd & 4th Sundays, 2–5pm, Unitarian Society, 113 Cottage Pl., Ridgewood, NJ. \$10 members, \$15 non-members. More info: 201/657-9956 or 914/476-7102, www.NorthJerseyEnglishCountryDancers.org, or rbrnussell@gmail.com.

Palisades Folk Dancers: Twice a month on Sundays (except June to Aug.), 3pm, Church of the Atonement, Engle St. & Highland Ave., Tenafly, NJ, \$10, hal2dial@gmail.com

Princeton Folk Dance Group: Tuesdays (except school closings), 7:30pm, YWCA All Purpose Room, 59 Paul Robeson Place (at intersection with Rte. 206), Princeton, NJ, www.PrincetonFolkDance.org, 732/230-3755, 609/912-1272, tuesdaynightfolkdance@gmail.com.

Princeton Folk Dancers: Fridays, 9pm (teaching 8pm), Susan Patterson Center, Stockton St. and Monument Dr. (behind Borough Hall), Princeton, NJ, www.PrincetonFolkDance.org, 609/912-1272, friday@princetonfolkdance.org.

Princeton Country Dancers: Wed. (and most 4th Saturdays) 8pm (intro/basics 7:30pm), \$10 Wed., \$11 Sat. (\$5 seniors & students), Suzanne Patterson Center, 1 Monument Drive, Princeton, NJ behind the former Borough Hall/police station, near intersection of Routes 27 & 206, 609/844-0459 or 609/275-7275, e-mail pcdinfo@aol.com. Performer listing at www.PrincetonCountryDancers.org, pickup band musicians welcome.

PCD English Country Dance Series: 2nd Saturday, 8pm (intro/basics at 7:30pm). \$10 (\$5 seniors & students), www.PrincetonCountryDancers.org, 609/844-0459

Scottish Country Dancing: most Tuesdays except June through Aug., 7:30–10pm, Fanwood Presbyterian Church, 74 South Martine Avenue (at LaGrande Avenue), Fanwood, NJ, www.rscds-nj.org, 732/356-3923

Swingin' Tern: see page opposite

Valley Contra Dance Society: 2nd and 4th Saturdays, 7:30pm (lesson at 7pm), Unitarian Church of The Lehigh Valley, 424 Center Street, Bethlehem, PA. \$12 (\$5 students). www.ValleyContraDance.org, 610/868-7432, valleycontradance@verizon.net

Village Contra: 2nd Fri., 7:30pm, gender-role free contra dance in NYC., at LGBT Center, 208 W. 13th St., open to all. More info at www.VillageContra.org.



More on dancing at the Country Dance and Song Society • www.cdss.org



At long last...

Swingin' Tern is thrilled to welcome dancers back to Live Contra Dancing at Swingin' Tern

Saturday, July 17th, 7:30pm–10:30pm (beginners' workshop at 7pm)

Bob Isaacs & Contra Rebels

This is a FREE Dance (donations are appreciated).

Proof of Covid Vaccination will be required—remember to bring your vaccine card to show at the ticket desk.

Face masks are optional but will be available at the ticket desk.

We have purchased new window fans to enhance cross-ventilation.

We are so excited to see everyone's smiling face as we come back home to the Swingin' Tern. All of us will feel like newcomers as we return to dancing after such a long hiatus. Along with your enthusiasm and dance shoes, bring along a measure of kindness and understanding as we all return to dancing mode.

Let us know you'll be coming by replying to the event announcement on Swingin' Tern's Facebook page at www.facebook.com/events/823359871719352.

Return to Tern on July 17th—**we can't wait to see you!**

Non-dancing children must be supervised at all times.

Contra Dancing to Live Music. All dances taught. No partner necessary. Beginners' lesson, 7pm; dance at 7:30pm. Soft soles only.

First Presbyterian Church of East Hanover

Parish House • 14 Hanover Road, East Hanover, NJ 07936

From I-287 northbound or southbound: Exit 39, travel East on Route 10 for approx. 3.5 miles. Exit by the Ford dealership ("To River Road/Okner Pkwy") onto Mount Pleasant Ave. Right at the second light onto Hanover Rd. then immediate left into the parking lot of the Parish House. From I-78: Exit 48 (Route 24 West) to Exit 2B, Route 510 East/Florham Park. Go 1.9 miles and turn left onto Hanover Rd. Turn right into the parking lot of the Parish House just before the road ends at Mount Pleasant Ave. Additional directions are on our website.

973/535-3274

SwinginTern.FolkProject.org

www.facebook.com/groups/36434042494

Acoustic Stayaway

Streaming Tuesday and In-Person Troubadour at Home Concerts

To join these events, please go to stayaway.FolkProject.org

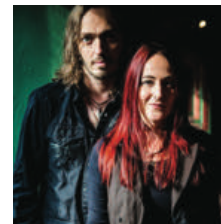
Fri., Jul. 2, CLOSED for the Holiday Weekend



Tue., Jul. 6, 7pm, online: Sawyer Fredericks is an Americana singer-songwriter with deep, beyond-his-years original lyrics and melodies. His raw, soulful vocals and powerful live performances have led this Upstate New York farm boy from iconic folk stages like Falcon Ridge, Caffe Lena, and The Bitter End to winning season eight of NBC's *The Voice*.

Fri., Jul. 9, 7:30pm, online: Open Stage is online the second Friday of every month. To sign up for the Main Stage, email Chairman Todd: openstage@folkproject.org. Or just

show up and perform at the round robin led by Scotty and Glenn. July's Open Stage Opener is the talented and delightful songstress **Chrissy Roberts**.



Tue., Jul. 13, 7pm, online: The Black Feathers have a sparkling onstage presence that grabs your attention and never lets go. Their gorgeous harmonies and heartfelt lyrics blend English folk and Americana for a unique twist on music that matters for its message and its magic.

Fri., Jul. 16, 7:30pm, online & in-person: Toby Walker, the amazing guitarist, astounding performer, and Folk Project favorite will be performing online and live for an all-vaccinated Troubadour at Home audience in Rockaway, NJ. Internationally and nationally acclaimed

Toby blends the styles of blues, ragtime, country, bluegrass, old-time jazz, and rock.



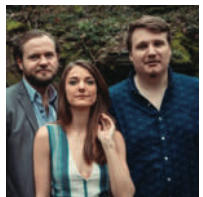
Tue., Jul. 20, 7pm, online: TBD

Fri., Jul. 23, 7:30pm, online & in-person: Abbie Gardner is a fiery Dobro player with an infectious smile. Whether performing solo or with Americana darlings Red Molly, her acclaimed tales of love and loss, both gritty and sweet, are propelled by her impeccable slide guitar chops. Her live show is truly unique. As an award-winning songwriter, captivating vocalist, and world-class lap-style Dobro player, she has an unmistakable sound all her own.



Tue., Jul. 27, 7pm, online: Genevieve is an all-around entertainer, a charismatic and unique talent with an impressive voice who has been wowing audiences everywhere for a long, long time. Her music spans multiple genres, incorporating elements from folk traditions to blues and jazz nuance to pop hookiness.

Fri., Jul. 30, online & in-person: South for Winter delivers a meticulously crafted, original blend of folk, blues, and jazz with an impressive assortment of instruments and crowd-pleasing three-part harmonies. Their songs intone a depth of emotion and richness that envelopes audiences and holds them spellbound.



WEEKLY e-WORKSHOPS and EVENTS at 7pm, unless otherwise noted

Mondays: *Songs that Sing to Me* workshop with Jay Wilensky

Thursdays: *Stayaway Songwriters Circle* workshop with Dave Kleiner

Second Fridays: *Stayaway Open Stage* with Todd Dennison

Alternate Sundays 3pm: *Stayaway Television Show* with Joe Guzzo

All Venues That Fit We Print

Please use contact information to verify dates and times of shows before you go

- Acoustic Cafe, Pascack Valley:** Our Lady of Mercy Church, 2 Fremont Road, Park Ridge, NJ, 4pm, entrance from the rear parking lot, \$15 advance/\$20 door, www.CafeAcoustic.org, 201/573-0718
- Albert Hall/Sounds of the NJ Pines:** Country/bluegrass/folk 6:30 outdoors every Saturday. GPS address: 131 Wells Mills Rd. (Route 532), Waretown, NJ, 609/971-1593 or www.AlbertHall.org
- Avenel Performing Arts Center:** 150 Avenel St, Avenel, NJ, AvenelArts.com, info@avenelarts.com, 732/314-0500
- Birdhouse Center for the Arts:** 7 North Main St., Lambertville, NJ, 8pm, concerts, open folk jams, song circles, \$15, www.BirdhouseCenter.org, birdhousecenter@gmail.com, 215/681-4660
- Bluegrass & Old Time Music Assoc. (BOTMA):** every 3rd Sun. from Sept. thru May, Embury United Methodist Church Hall, 49 Church St, Little Silver, NJ. 1–5pm. \$5 for BOTMA members, \$6 non-members. Info: www.NewJerseyBlueGrass.org
- Community Theatre at Mayo Performing Arts Center:** 100 South Street, Morristown, NJ, 8pm, attendance limited to 150 people, www.MayoArts.org, info100@mayoarts.org, 973/539-8008
- Ethical Brew Coffeehouse:** Ethical Culture Society of Bergen County, 687 Larch Avenue, Teaneck, NJ, 8pm, \$20 online/\$25 at door, www.EthicalBrew.org, 201/836-5187
- Fanwood Performance Series:** Kuran Cultural Arts Center, 75 North Martine Avenue, Fanwood, NJ, www.FanwoodPerformanceSeries.org, info@fanwoodperformanceseries.org, 908/418-1301, INACTIVE
- Folk Arts Fridays at Ethical Culture:** 516 Prospect St., Maplewood, every 2nd Friday (except June–Sep.). Bring instruments and voices for singing, playing, quilting, crafts. Run by Lisa Novemsky and Anja Moen, www.EssexEthical.org, lnovemsky@comcast.net, 973/763-8293
- Folk Music Society of NY:** OSA Hall, 220 East 23rd St, Suite 707 (between 2nd and 3rd Aves), NYC, 7:30pm, Folk Project members pay the FMSNY member's price, \$25/members \$20, FolkMusicNY.org, nypinewood@aol.com
- Godfrey Daniels:** 7 E. 4th St., Bethlehem, PA, 610/867-2390, www.GodfreyDaniels.org
- Good Coffeehouse:** The Good Coffeehouse at The Old Stone House, 336 3rd Street, Brooklyn, NY, doors open at 7:30pm, music at 8pm, 718/768-3195 or www.theOldStoneHouse.org
- Hopewell Theater:** 5 South Greenwood Ave, Hopewell, NJ, 8pm, dine-in theater with small plate options, HopewellTheater.com, info@hopewelltheater.com, 609/466-1964, temporarily CLOSED
- Hurdy Gurdy Folk Music Club:** Fair Lawn Community Center, 10-10 20th Street, Fair Lawn, NJ, www.HurdyGurdyFolk.org, info@hurdygurdyfolk.org, 201/384-1325, INACTIVE
- Irish American Association Of North West Jersey:** 352 Richard Mine Road Rockaway, NJ, monthly traditional Irish music sessions, 973/366-5980, www.iaanwj.com
- Morristown Uke Jam:** Ukulele playalong and jam, 7pm, every 1st Wed at South Street Creamery, 146 South Street, Morristown (on the Green in warm weather). Info: www.meetup.com/MorristownUkeJam, Mark 973/978-0751, MorristownUkeJam@gmail.com
- The Newton Theatre:** Skylands Performing Arts Center, 234 Spring Street, Newton, NJ, 8pm, www.TheNewtonTheatre.com, info@thenewtontheatre.com, 973/383-3700
- NJ Friends of Clearwater Circle of Song:** Eatontown Library, 33 Broad Street (Route 71), Eatontown, NJ, www.IngridMusic.com, 732/869-9276,
- NJ Songwriters Circle:** temporarily replaced with the Stayaway Songwriters Circle, every Thursday at 7pm.
- NJAMP Acoustic Jams:** in Somerville every Thursday, 6pm, Mannion's, 150 West Main St., Somerville, in Matawan every other Wednesday, 6pm, Maloney's, 119 Main Street, Matawan, 908/203-9700,

Virtual Summer Art Camp!

Jul. 5–Jul. 23, 9:30am–1pm • Zoom

Watchung Arts Center • WatchungArts.org

Join us for a new and exciting Virtual Summer Art Camp, now in its 29th year inspiring young artists, at the Watchung Arts Center. The three-week program, for ages 5–11, begins on July 5 and runs until July 23, from 9:30am to 1pm, Monday through Friday.

Under the direction and instruction of Mrs. Monica Schraiber Otero, Google Classroom trained and experienced in teaching art remotely, this Art Camp focuses on Creativity, Imagination, and Ingenuity. The Art Camp offers children a unique opportunity to acquire or improve artistic skills, learn new techniques, explore different media, and become aware of the wonders of world cultures. All, while having fun!

Central Theme for 2021: PICTURESQUE CULTURES OF THE WORLD

WATCHUNG ARTS CENTER
2021 VIRTUAL SUMMER
ART CAMP
AGES 5-11
JULY 5 - JULY 23
VIA ZOOM

Cycles I, II & III Monday - Friday 9:30 AM - 1:00 PM
New Theme: Picturesque Cultures

Travel around the world and discover different art forms from Europe, the Americas, Asia, Africa, and Oceania. Japanese prints, dream catchers, pottery, Chinese lanterns, totem poles, pieces inspired by master artists and ancient civilizations are just some of the projects in this exciting multicultural experience!

For Registration, Camp Fees, and Payment Options visit
http://watchungarts.org/classes/art-classes-for-children-and-teens/#Children_Summer_Art_Camp
18 Stirling Road - Watchung, NJ - (908) 753-0180
wacenter@optonline.net

Save a Tree—Sign up for E Newsletters

Our monthly newsletter is now available in electronic version. Advantages of receiving the E-Newsletter?

- You will receive it earlier each month
- The web and email links will be clickable
- It will be in color
- You will be less likely to misplace it
- You will save \$5 on your membership
- You will save the Folk Project almost \$1 per month
- This will save trees, energy, and reduce greenhouse gases

Sign up online at enews.folkproject.org

Join the Folk Project

Choose at least one: New Renew Skip to my Lou
 Name: _____ Home Phone: _____ Cell Phone: _____
 Address: _____
 E-mail 1: _____ E-mail 2: _____

Do you play or sing music?

- For fun Occasionally perform in public Professionally or semi-professionally

Help us save Trees and save Energy! Choose to receive your Newsletter via Email!

- Receive Monthly Newsletter via Email Receive Paper Newsletter
 (Save \$5.00 from each membership category with our Go Green eNewsletter Discount!!!)

Please consider supporting the Folk Project with a Premium membership!

Choose your (fully tax deductible) membership category below:

- Individual membership @ \$25/yr. (\$20 for Go Green eNewsletter!) \$ _____
 Family membership @ \$30/yr. (\$25 for Go Green eNewsletter!) \$ _____
 Names of additional family members: _____

- 'Bard'** Premium Membership @ \$50/yr. (\$40 is tax deductible)
 Receive 1 special DVD featuring blues performances from Horses Sing None of It
- 'Balladeer'** Premium Membership @ \$100/yr. (\$80 is tax deductible)
 Receive 2 special DVD featuring blues performances from Horses Sing None of It
- 'Troubadour'** Premium Membership @ \$250/yr. (\$200 is tax deductible)
 Receive 5 special DVD featuring blues performances from Horses Sing None of It
- 'Star Performer'** Premium Membership @ \$500/yr. (\$400 is tax deductible)
 Receive 10 special DVD featuring blues performances from Horses Sing None of It
- _____ Multiple Year Membership – (You do the math!)

Make your check payable to: The Folk Project. If membership in the Folk Project is important to you and you feel that you cannot afford our membership dues, please contact membership@folkproject.org for arrangements. The Folk Project is a 501(c)(3) Non-Profit. Donations to the Folk Project are Tax Deductible.

Sign up online at folkproject.org/membership.shtml

"...Horses Sing None of It!"

A folksy non-commercial public access TV series featuring a surprising variety of guest performers, hosted by Ralph Litwin. All types of mainly acoustic music, storytellers, dancers, others. Schedule available at www.folkproject.org. Watch archived shows on www.youtube.com/HSNOI. Seen on: Cablevision Morris (Ch.21), Bergen (Ch.77), and Oakland (Ch76), NJ, 9pm Sun.; Manhattan Neighborhood Network (MNN), New York City 2:30pm Thurs. on Time/Warner Cable Ch.56 & 1996, RCN Cable Ch.83 & FIOS Ch.33; also broadcast via streaming video on the web at www.MNN.org; Service Electric Cable TV, Allentown, PA (airing in 84 towns) Thurs. 9:30pm, Ch.50; Fargo Community Access 68 www.CityOfFargo.com/CityInfo/AccessTV/Access99schedule on Ch.68 at 6:30pm Fri. & 3pm Mon. in Fargo, North Dakota; Comcast Central NJ 2, 3:30pm Fri., Ch.280, Simulcast on Comcast Northwest NJ (Hunterdon County area) Ch.21; Brattleboro Community TV Mon. at 6:30pm, and Sat. at 7am, Ch.8., Brattleboro, VT



Mail with payment to:
 FP Membership
 c/o D L Graham
 886 Ray Ave.
 Union, NJ 07083

www.meetup.com/NJ-Acoustic-Music-in-the-Park

Outpost In The Burbs: First Congregational Church, 40 South Fullerton Ave, Montclair, NJ, www.OutpostInTheBurbs.org, info@outpostintheburbs.org, 973/744-6560

People's Voice Cafe: Community Church of New York Unitarian Universalist, 40 East 35th St., New York, NY, 8pm, cafe entrance at far right of building at street level, \$20 contribution/\$12 members, www.PeoplesVoiceCafe.org, 212/787-3903

Pinewoods Folk Music Club: see Folk Music Society of NY

Princeton Folk Music Society: Christ Congregation Church, 50 Walnut Lane, Princeton, NJ, 8pm, \$25, members \$20, students 12–22 \$10, children \$5, www.PrincetonFolk.org, info@princetonfolk.org, 609/799-0944

Porch Stomp Festival: Nolan Park, Governors Island, NYC, 11am–5pm, dozens of bands, artists, or performing arts organizations use the historic porches of Nolan Park as a space for performance and education, highlighting artistry ranging from traditional folk to old-time, blues, roots, bluegrass, and Americana, free, www.PorchStomp.com; **Sat. 6/26** 8th Annual Festival, concerts, workshops and open jams

Roxbury Arts Alliance: Roxbury Performing Arts Center, 72 Eyland Ave, Succasunna, NJ, 7pm, RoxburyArtsAlliance.org, 973/945-0284; **Thu. 7/15** The Psychedelcats, free

Roy's Hall: 30 Main Street, Blairstown, NJ, 8pm, RoisHall.org, 908/362-1399

Sacred Bean Coffeehouse: Flanders United Methodist Church, 2 Park Place (corner with Hillside Ave), Flanders, NJ, 7pm, www.angelfire.com/nj/rayw/Coffeehouse.html, sqwinch@optonline.net, 973/584-5426

Sacred Harp Singings: Much info at www.fasola.org, 2nd Sun.: 2pm, St. Paul's Church, 199 Carroll St., Brooklyn. 718/293-2848, 4th Sun.: 2pm, Montclair Friends Mtg., Park & Gordonhurst. 973/509-2165, Midweek singing Wednesdays, 7–9:30pm, St. John's Lutheran Church, 81 Christopher St. (bet. Bleecker & W. 4th Sts., near 7th Ave. S.), Greenwich Village, www.NYCSacredHarp.org/localsingings.html

Songwriting Circle of Central NJ: Every other week in the Edison, NJ area (exact location depends on weather). Go to facebook.com/groups/songwriting.circle.nj or email neilfein@gmail.com

Stony Brook Friends of Old Time Music Jam: Westbrook Restaurant and Pub, 525 Talmadge Avenue, Bound Brook, 7:30pm every 1st Tuesday., 732/356-9736 or visit www.DiamondCut.com/oldtime

Walkabout Clearwater Coffeehouse: Memorial United Methodist Church, 250 Bryant Ave., White Plains, NY, 7:30pm, Walkabout Chorus "Teachabout" at 6:45pm, \$20 advance/\$25 door, www.WalkaboutClearwater.info, info@WalkaboutClearwater.info

Watchung Arts Center: 18 Stirling Rd, Watchung, NJ, 8pm, concerts streamed via Zoom, tickets available at WatchungArtsCenter.eventbrite.com, \$20 advance, \$25 door, \$22 members, WACenter@optonline.net, 908/753-0190

Woodbridge Wednesdays: The Lawn at Woodbridge High School, 1 Samuel Lupo Place, Woodbridge, NJ, 7:30pm, food trucks, craft beer, wine available, free parking in the high school parking lots, free, www.WoodbridgeArtsNJ.org/woodbridge-wednesdays.html; **Wed. 6/23** Richard Thompson; **Wed. 6/30** Tristan McIntosh; **Wed. 7/7** Raul Malo; **Wed. 7/14** Crystal Bowersox; **Wed. 7/21** Meta & The Cornerstones; **Wed. 7/28** Nella

News12 Covers the Folk Project

The Folk Project was recently the subject of a news report on *News12 New Jersey* because of our innovative pandemic activities. Mark Schaffer and Todd Dennison were interviewed explaining what we have been doing and what the benefits have been.

To see the report, go to tinyurl.com/FP-NJ12.



A Word from Our Leader

Is that you? It's been so long, and it's so good to see you—in person! That's right, friendly vaccinated audiences are gathering safely for house concerts. Members are excited about our upcoming 4th of July picnic—hope you can make it!

THE PREZ SEZ

The Troubadour and Swingin' Tern are making plans to safely reopen—very soon. You'll find all the details about these face-to-face (well, maybe not that close) events in our newsletter and on our website, along with information about our continued virtual presence.

It's been a long time...and The Folk Project has weathered this pandemic with creativity, community, and nonstop music. Thanks to all for making that happen. Welcome back—the new normal is better than ever with lots of music, friendship, and joy, more often than before. See you soon.

BIG HUGS,

—Betsy Rose, FP President, aka Elizabeth Rose Lachowicz

Look Who's Coming to FPTV Soon!

If you're reading this article, I believe I can safely assume you love music. If you're anything like me, you are curious about the people who make the music we have come to love. To satisfy my desires, I began interviewing a few musicians for the Folk Project Television Show. It's been over a year since the first interview, and I am delighted to share some announcements with you.



We have been talking to **Victoria Vox**, and she is eager to be on the show. This marvelous performer is well-known for her skills

on the ukulele as well as the mouth trumpet. We plan on asking her a bunch of questions about those skills and much more.

The husband and wife duet calling itself **Rustic Riders** has said they would like to appear on the show. You can look forward to music and conversation with **Lisa** and **Klaus Meissner**. They have been a Troubadour act, so you may know them already.

Additionally, I will be interviewing a very young performer, sixteen-year-old **Gianna Harris**. Gianna "GiGi" Harris is a singer, stage, and screen actress born and raised in NJ. Gigi is most notably known for her work in Andrew Lloyd Webber's Broadway and Touring Production of *School of Rock the Musical*. She neared 800 performances before her "graduation" from Horace Green. Be sure to tune into the show for some surprising revelations about this young woman.

Of course, your host, **Joe Guzzo**, will be providing music from all these acts. Watch our Facebook page, the Folk Project Video channel on YouTube, and this newsletter for updates and announcements about these and other upcoming interviews.

59½ Annual Philadelphia Folk Festival

Sat.–Sun., Aug 21–22 • Spring Mountain Ski Area & Online

The Philadelphia Folksong Society is very proud to present the **59½ Philadelphia Folk Festival**—2021 'Pocket Sized' Edition—on Saturday and Sunday, August 21–22, both in person and digitally at folkfest.org, with three exceptional stages! Taking place at the Spring Mountain Ski Area in Upper Salford Township, PA, this special edition festival blends all the elements of the live event, along with the brand-new digital site created for the 59th PFF so that attendees can join virtually for the live shows, pre-recorded digital shows, and the archives, or attend in person.

Visit folkfest.org for more information.



NEW BUSINESS

Reopen Troubadour: Troubadour Booking Chair Mike Agranoff quoted his proposal as follows:

"I propose that the Troubadour resume its weekly schedule of concerts, Open Stages, and other such events starting Friday, September 3 under the following conditions:

- ✕ All attendees, staff, and performers must have received their final vaccination at least 2 weeks prior to the date of the show.
- ✕ There will be no limits on attendance other than the capacity of the room, or any social distancing requirements.
- ✕ Wearing of masks will be optional.

We may decide to reverse or alter this decision if COVID conditions warrant it, and all performers booked will be cautioned of this possibility."

Website Update: Webmaster John Lamb reported that we have reached the point where the new website effort, which had been suspended while waiting for things to open up again, needed to be restarted. The old website, which he had originally planned to be supported until September 1, will no longer be supported to concentrate on the launch of the new website. In order to try to bring the new site on line earlier, he requested that anybody with content for the new website contact him immediately.

Meeting was adjourned at 10:20pm. Next month's meeting is Tuesday, July 6, at 8:15pm, in cyberspace via Zoom.

Good o' the Order

A place to share news with your Folk Project Community about memorable events and challenges. Please send items to goto@folkproject.org

Gary Pratt reported the obvious to anyone at the Board meeting; he got his first haircut in 15 months. He, his wife, and their dog also had a chance to visit his brother and parents. His family especially enjoyed the dog.

Mark Schaffer reported that his 101 year old mother sends her regards. She also now has full time help, whom she considers company, and will not talk on the phone for more than 30 seconds in deference to her company. He also reported that Don Slepian, a famous synthesizer artist, will do a backyard tribute to Alan and Miriam Bases, RSVP required. He also announced that the Tuesday live concerts will henceforth be called "Streaming Tuesday."

Lindsey Meyer visited with her son **Miles Regan** and his wife for the first time in 17 months. They were joined by her son **Wyatt Regan** for a joyous family reunion. Some of you remember Miles & Wyatt as the cute little boys sitting quietly on the floor in front of the stage, listening raptly to the musicians. They're all grown up now and creating their own music. She also announced that the library she has been temping at wants to hire her again. They also hired her to play guitar for children's story time.

Joe Guzzo is proud to show the concept for his new splash screen for the Folk Project Television Show. He expects his graphics designer grandson to improve the concept.

Elizabeth Lachowicz has had the opportunity to see more of her son in the last two weeks than in the last two years. Her son is on leave, and he and his girlfriend are presently staying with her. She is very proud of the young man he has become. She was also grateful for the help her neighbors gave her with her house, both now and for the six months she was gone.

In Memoriam

A place to recognize the passing of members of the Folk Project Community.

Please send information for this section to community@folkproject.org.

To receive timely notifications of passings, provide your email address to obits@folkproject.org.

Thankfully, no submissions this month.

Folk Project Board Meeting • June 1, 2021

Board Meeting: The Summary

The meeting was called to order at 8:15pm, via Zoom, by President Elizabeth Lachowicz.

Present: Trustees: Lois DeRitter, Joe Guzzo, Pamela Zave, Evelyn McNally, Diane Polledri, Allan Kugel; Officers: Elizabeth Lachowicz, Paul Fisher, Jeff Canter; Committees: Mark Schaffer, Gary Pratt, Mike Agranoff, George Otto, John Mahon, Leigh Walker, Lindsey Meyer, Evelyn Maurer, Bob McNally, John Lamb.

ADMINISTRATIVE REPORTS

Treasurer's Report: Treasurer Peggy Karr's report was quoted by President Elizabeth Lachowicz as follows in regards to the \$5000 anonymous donation: "I suggest [the donation report be clarified as] a one-time 'other income' distribution of \$3800 to Troubadour and \$1200 to OpenStage to help offset any income shortfall or to be used as each Committee feels appropriate."

COMMITTEE REPORTS

Shuttered Venues Operators' Grant (SVOG) Ad Hoc Committee: Chair Bob McNally reported that the FP has been unable to file an application to the SVOG due to not having any paid employees. They have reached out to the Small Business Development Center to see if the SBDC found an issue with the Small Business Administration's interpretation of Congress' intent.

Membership: Chair Gary Pratt reported that there was an increase in the number of memberships for the first time since the Pandemic. He also reported that Mike Agranoff converted the membership list from FileMaker to Excel for use in the Join It cloud platform.

Special Events: Chair Mark Schaffer remarked that a Troubadour at Home concert feels natural after being there for 15 minutes. He also announced that they have reduced admission to \$10, changed the start time to 7:30pm and the creel has been brought back to subsidize the performer's compensation. Mike Agranoff mentioned that the camera used in HSN01 is much better than the one used at Troubadour at Home, and wondered if it were possible to borrow that. Gary Pratt said he would look into it.

Publicity/Web: Trustee and FP YouTube Administrator Joe Guzzo reported that he is starting to schedule new performer interviews for the FP YouTube show which attracts a lot of attention to the show and provides income to the performers. He encourages performers, or anyone who knows performers, to contact him regarding scheduling an interview.

Community Services: Chair Evelyn Maurer wanted to remind everyone that the Carolyn Messina musical equipment estate sale is still continuing. Evelyn is still having computer problems, so she requests that anyone wanting to contact her do so by phone or text.

Swingin' Tern: Chair Leigh Walker will also check COVID vaccination cards at the door.

Newsletter: Chair George Otto is working to keep the Newsletter event schedule accurate, and requested that people submitting event announcements keep him up to date, and be sure to add any COVID requirements.

OLD BUSINESS

Current CDC Guidelines, Motion to Amend: Special Events Chair Mark Schaffer reported that the original motion as approved by the Board limited the audience to 25. The limit of vaccinated people present at all Folk Project venues and events be defined as the number allowed under New Jersey COVID guidelines at the time of each event. Motion passed.

Bylaws and Board Size: Trustee Pamela Zave reported that she completed her report and that the Board is presently in compliance with the Bylaws. Secretary Jeff Canter reported that the Bylaws have been updated and there is now an official Board of Directors page on the Wiki.

July 4th Picnic: Elizabeth Lachowicz reported that the annual Folk Project July 4th picnic is a go(!) and that Jay Wilensky has requested that attendees RSVP to him.

Members' Gigs (& Friends)

Please use contact information to verify dates and times of shows before you go

Mike Agranoff (MikeAgranoff.com, mike@mikeagranoff.com): **Sat. 6/26** 12:30pm, NJ Historical Storytelling Festival, (in case of rain the show will be presented on Zoom, check www.njstorynet.org on the morning of the Festival for the Zoom link), East Jersey Old Town Village, 1050 River Rd., Piscataway, NJ, kkar495@hotmail.com, 732/745-4177, free

Circle Round the Sun (Marie Trontell, Jay Wilensky, Chris Bukata, George LaVecchia, Joe Brice, bluesq55@gmail.com): **Sat. 7/3** 8pm, Albert Music Hall, 131 Wells Mill Road (Rt. 532), Waretown, NJ, www.AlbertHall.org, 609/971-1593, \$5; **Sat. 7/31** 5pm, Warren County Farmers Fair, 877 Uniontown Road, Phillipsburg, NJ, www.WarrenCountyFarmersFair.org

Grover Kemble (www.GroverKemble.com, governkemble@gmail.com): **every Thursday** 6–9 pm, Caffe Navona restaurant, 147 US-46, Rockaway, NJ, caffenavona.com, reservations and performance time confirmation 973/627-1606

Troubadour Acoustic Concert Series

Resuming Operations in September

Weekly concerts and Open Stages at the Troubadour will resume starting September 3, 2021. The increasing rate of vaccinations, decreasing rate of COVID cases, and corresponding increasing permissible size of public gatherings decreed by the CDC and NJ Department of Health indicate that we should be able to resume concerts at full attendance with masking optional by that time. To help assure our patrons and staff of the safety of these events, we will be requiring that all performers, staff, and patrons must have received their final vaccination at least two weeks prior to the date of the concert. Vaccination cards will be required and checked for every attendee at every performance. The Morristown Unitarian Universalist Fellowship has given us the green light to use their facilities under these conditions.

We will also be live streaming most concerts from the start on the same Facebook Live platform that has carried our Stayaway concerts this past year. Friday Stayaway and Troubadour At Home House Concerts will terminate at the end of August, but Tuesday Stayaway Concerts will continue.

We will continue to monitor the COVID situation. And should any spikes occur that cause the NJ Department of Health to resume restrictions on attendance, social distancing, or masking, we will react accordingly, and either impose those limits or halt operations accordingly.

Stay tuned for further developments, and watch for our Fall schedule of performers.

—Mike Agranoff, Program Chair

Work Opportunities

Programming Help Wanted. WordPress, PHP, and CSS programmers wanted for Folk Project website assignments. No pay, minimal resources provided, long hours of complete isolation, constant mental challenge. Safe return probable if fully vaccinated. Honor and recognition in case of success. Contact John Lamb, webmaster@folkproject.org

Meadow Lakes, a retirement community in East Windsor/Hightstown, is looking for Dining Services staff. Waiters/waitresses are needed in the main dining room and in the cafe. Perfect job for high school/college students. Friendly coworkers and pleasant residents. Meadow Lakes is located on Route 571/Etra Road, ten minutes or less from Turnpike Exit 8. For information on hours and salary, please contact Matt Grum, Director of Dining Services, at mgrum@springpointsl.org.

FP Calendar: July 2021

For venue addresses & contact information, see [Venues](#), [Dance](#), or [Gigs](#)

Please use contact information to verify dates and times of shows before you go

- 30/Wed.** Woodbridge Wednesdays: 7:30pm, Tristan McIntosh, free, food trucks, craft beer, wine available, free parking in the high school parking lots
- 1/Thur.** **EVERY THURSDAY: 7pm, FP Acoustic Stayaway Workshop, Songwriters Circle with Dave Kleiner**
EVERY THURSDAY: 6pm, Mannion's NJAMP Acoustic Jam. Somerville. 908/203-9700; [meetup.com/NJ-Acoustic-Music-in-the-Park](https://www.meetup.com/NJ-Acoustic-Music-in-the-Park)
EVERY THURSDAY: 8pm, Maplewood International Dancers. Maplewood, [njfolkdance.tripod.com/fd_maplewood.html](https://www.njfolkdance.tripod.com/fd_maplewood.html)
EVERY THURSDAY: 10pm, WBAI 99.5FM; WBAI.org, www.facebook.com/WBAI-Folk-Radio
- 2/Fri.** **Troubadour at Home Concert: 7:30pm, CLOSED for the Holiday Weekend**
- 3/Sat.** **Swingin' Tern: CANCELED**
EVERY SATURDAY: CD*NY: 8pm, Contra dances. NYC, www.cdn.org
Circle Round the Sun: 8pm, Albert Music Hall, 131 Wells Mill Road (Rt. 532), Waretown, NJ, www.AlbertHall.org, 609/971-1593, \$5
- 4/Sun.** **ALTERNATE SUNDAYS: 3pm, FP Stayaway Television with Joe Guzzo**
EVERY SUNDAY: 7pm, Music You Can't Hear on the Radio. WPRB 103.3FM; www.wprb.com
EVERY SUNDAY: 8-10am, Radio Nowhere. WMSC 90.3FM Montclair or streaming at www.wmscradio.com
FP July 4 Picnic, 1pm, Lewis Morris Park, Sugarloaf A (see page 1)
- 5/Mon.** **EVERY MONDAY: 7pm, FP Acoustic Stayaway Workshop, Songs that Sing to Me with Jay Wilensky**
- 6/Tues.** **FP Acoustic Stayaway Concert: 7pm, Sawyer Fredericks**
FP Board Meeting: 8:15pm, online
EVERY TUESDAY: 7pm, Northwest NJ Acoustic Jam. Westside United Methodist Church, Hopatcong. 973/770-0179
EVERY 1ST TUESDAY: 7:30pm, Stony Brook Friends of Old Time Music Jam, The Westbrook Restaurant and Pub, Bound Brook, www.DiamondCut.com/oldtime, 609/924-5353
ALTERNATE TUESDAYS: 7pm, Open Mic, Daddy Matty's BBQ Restaurant, 6 Elmer St., Madison. 973/845-8711; www.DaddyMattsBBQ.com
- 7/Wed.** **EVERY WEDNESDAY: 7:30pm, Morristown Int'l Dancers.** Mountain Lakes Community Church. 973/228-5966, [NJFolkdance.tripod.com/fd_morristown.html](https://www.NJFolkdance.tripod.com/fd_morristown.html)
EVERY WEDNESDAY: 8pm, Princeton Country Dancers, Contra Dance, \$10 (\$5 seniors & students). More info on [Dance page](#).
EVERY 1ST WEDNESDAY: 7pm, Folk Open Sing. Ethical Culture Society, 53 Prospect Park West, Brooklyn. 212/636-6341 or 718/788-7563
EVERY 1ST WEDNESDAY: 7pm, Morristown Uke Jam; meetup.com/MorristownUkeJam; Mark 973/978-0751, MorristownUkeJam@gmail.com
ALTERNATE WEDNESDAYS: 6pm, Maloney's NJAMP Acoustic Jam, Matawan. 908/203-9700; meetup.com/NJ-Acoustic-Music-in-the-Park
Woodbridge Wednesdays: 7:30pm, Raul Malo, free, food trucks, craft beer, wine available, free parking in the high school parking lots
- 9/Fri.** **FP Acoustic Stayaway Concert: 7:30pm, Open Stage**
Troubadour: CANCELED
- 10/Sat.** **FP Evening o' Music: 7:30pm, CANCELED (see every Monday Stayaway workshop instead)**

EVERY 2ND SATURDAY: 8pm, Princeton Country Dancers, English Country Dance, \$10 (\$5 seniors & students). More info on [Dance page](#).

13/Tues. **FP Acoustic Stayaway Concert: 7pm, The Black Feathers**

14/Wed. Woodbridge Wednesdays: 7:30pm, Crystal Bowersox, free, food trucks, craft beer, wine available, free parking in the high school parking lots

15/Thur. **Newsletter Deadline: Send stuff to newsletter@folkproject.org**

EVERY 3RD THURSDAY: 6:30pm, Central NJ Song Circle. Boxwood Coffee, 143 E Broad St, Westfield, NJ. www.facebook.com/CentralNJSongCircle

EVERY 3RD THURSDAY: 6:30-8pm, Thursday Night Sing Along, Sussex-Wantage Library, Wantage, NJ, www.FriendsOfSWLibrary.org

Roxbury Arts Alliance: 7pm, The Psychedelicats, free

16/Fri. **Troubadour at Home Concert: 7:30pm, online & in-person, Toby Walker**

17/Sat. **Swingin' Tern: Bob Isaacs & Contra Rebels**

20/Tues. **FP Acoustic Stayaway Concert: 7pm, TBD**

21/Wed. Woodbridge Wednesdays: 7:30pm, Meta & The Cornerstones, free, food trucks, craft beer, wine available, free parking in the high school parking lots

23/Fri. **Troubadour at Home Concert: 7:30pm, online & in-person, Abbie Gardner**

24/Sat. **ALMOST EVERY 4TH SATURDAY: 8pm, Princeton Country Dancers, Contra Dance, \$11 (\$5 seniors & students).** More info on [Dance page](#).

25/Sun. **EVERY 4TH SUNDAY (EXCEPT JULY AND AUGUST): 2-5:30pm, Sacred Harp Singing, Montclair Friends Meeting House, 289 Park Street, Upper Montclair, NJ; gssh.hostoi.com**

27/Tues. **FP Acoustic Stayaway Concert: 7pm, Genevieve**

28/Wed. Woodbridge Wednesdays: 7:30pm, Nella, free, food trucks, craft beer, wine available, free parking in the high school parking lots

30/Fri. **Troubadour at Home Concert: 7:30pm, online & in-person, South for Winter**

31/Sat. Circle Round the Sun: 5pm, Warren County Farmers Fair, 877 Uniontown Road, Phillipsburg, NJ, www.WarrenCountyFarmersFair.org

Woodbridge Summer Concerts

Free Outdoor Concerts Five Nights A Week

Join us for a musically diverse series of concerts under the stars! Whether your groove is Oldies Monday, Tribute Tuesdays, Eclectic Wednesdays, Local Band Thursdays, or Americana Sundays, there's a night for you!

- ✦ Concerts at the Woodbridge High School Concert Field, 1 Samuel Lupo Place, Woodbridge, NJ.
- ✦ Performances at 7:30pm except for Sunday at 7pm
- ✦ Seating is socially distanced. Bring a chair or blanket.
- ✦ Beer, wine, food, and available other vendors most nights.
- ✦ Dogs on leashes welcome!
- ✦ Wheelchair accessible.
- ✦ Bring the whole family!

To see the video preview, go to tinyurl.com/FP-WB2021video.

For more information, go to WoodbridgeArtsNJ.org.

